



# CAKE SHOWCASE

DDM36R/48R/60R/72R-CB



## TECHNICAL SPECIFICATIONS

- Refrigerant **R290**
- Type of Defrost **Automatic**
- Interior Finish **Stainless Steel**
- Exterior Finish **Black**
- Temperature Range °F **33 ~ 41°F**
- Compressor Power (HP) **36R/48R/60R: 4/9**  
**72R: 4/7**
- Nema Config. **NEMA5-15P**



## PRODUCT FEATURES

- Copper evaporator, highly durable and corrosion-resistant.
- Digital temperature controls with LED display for precise adjustment and automatic defrosting system.
- Temperature Range 33 ~ 41°F, with auto defrost function, which ensures optimal performance day-in and day-out.
- R290 Natural Refrigerant promotes faster cool down and efficient energy consumption.
- Side glasses, Interior and canopy LED light with switch on the right side to always show your products at their best
- Double pane tempered glass, shatter and temperature resistant, durable, and safe.



## HIGH QUALITY & ROBUST DESIGN



Los Angeles | San Francisco | Dallas  
Houston | Florida | Chicago | New Jersey

1-800-931-8628

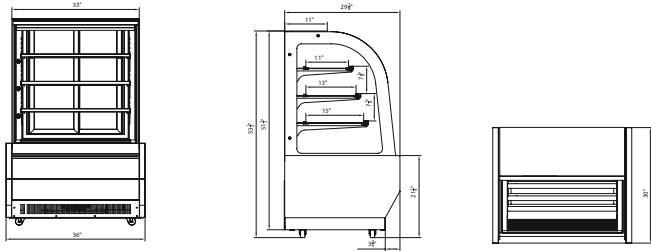
@ info@dukersusa.com

www.DukersUSA.com

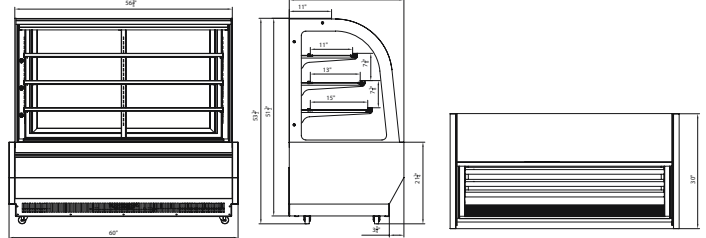
# DETAILS & SPECIFICATIONS

## DDM36R/48R/60R/72R-CB

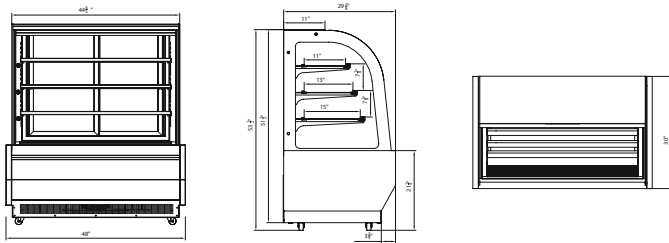
DDM36R-CB



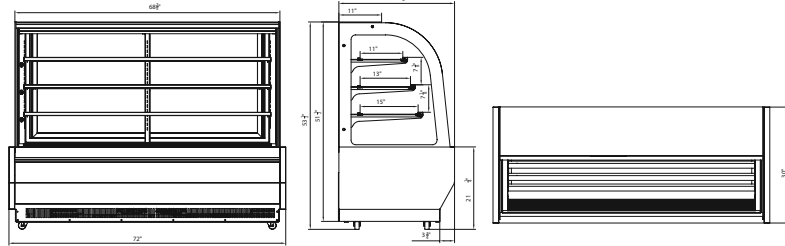
DDM60R-CB



DDM48R-CB



DDM72R-CB



MODEL	EXTERNAL DIMENSION WXDXH (INCHES)	PACKAGING DIMENSION WXDXH (INCHES)	PRODUCT NET WEIGHT	PRODUCT GROSS WEIGHT	40HQ CONTAINER CERT.
DDM36R-CB	36 x 29 7/8 x 53 1/2	39 3/8 x 33 4/8 x 56 2/8	190 lbs	215 lbs	26
DDM48R-CB	48 x 29 7/8 x 53 1/2	51 1/8 x 33 4/8 x 56 2/8	220 lbs	245 lbs	22
DDM60R-CB	60 x 29 7/8 x 53 1/2	63 x 33 4/8 x 56 2/8	270 lbs	300 lbs	13
DDM72R-CB	72 x 29 7/8 x 53 1/2	74 6/8 x 33 4/8 x 56 2/8	300 lbs	330 lbs	13



115/60/1  
NEMA-5-15P



Los Angeles | San Francisco | Dallas  
Houston | Florida | Chicago | New Jersey

1-800-931-8628

@ info@dukersusa.com

www.DukersUSA.com